

Fact Sheet

CWEmaxx 600

BIZERBA

Our versatile checkweigher CWEmaxx is suitable for a high throughput. The all-rounder among the checkweighers can be used for numerous applications and allows weighing of most varied products due to its IP rating.



More information
High performance
with a wide range of
solutions and options.

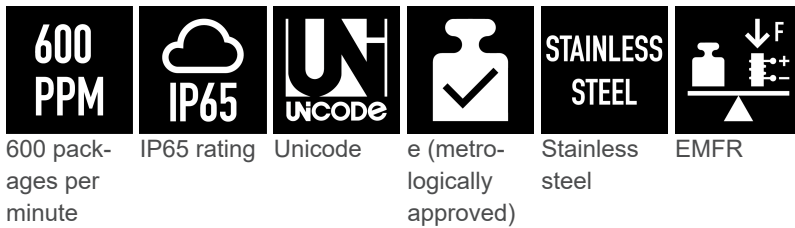
Specifications	Facts	Details
Weighing data	Weighing range: 600 g Scale division d: 0.2 g Verification scale interval e: 0.2 g Minimum load: 15 g	
Performance data	Max. throughput: 600 ppm Max. belt speed: 170 m/min Min. belt speed: 5 m/min	Depending on length of weighing conveyor Depending on length of weighing conveyor
Device version / material	Stainless steel	1.4301
Operating panel	12" color touchscreen	
Interfaces	USB, EDP 1, 8 inputs, 8 outputs, Ethernet	EDP 1 (RS232 or RS422 or TTY)
IP rating	IP65	Conveying unit Control cabinet Display
Transport	Left to right right to left 750-1,150 mm +/-30 mm	Conveying direction Transport height
Conveyor belt	Belt width: Belt lengths: Weighing conveyor length: Infeed conveyor length: Rejection conveyor length: Belt color: Roll diameter: Belt unit and quick-change belt system	100 mm Length specifications always as axle distance: 200, 250, 325 mm 400, 600 mm 600, 750 mm white 22 mm Rollers made of aluminum, surface hard coated
Ambient conditions	+10 °C to +40 °C 20 - 90%, non-condensing	Operating temperature Humidity
Energy supply	100 - 240 V, 50 - 60 Hz 500 - 750 VA 6 bar	Power supply Power consumption Compressed air supply
Software licenses	STATISTICS WEIGHT_CLASSES	To create statistics For classification of more than 3 products
Software variants	Code page software Unicode software	Data transfer (texts & strings) Data transfer (texts & strings) in UTF-8 coding
further characteristics	Article memory Weight classes Remote maintenance Web interface	100,000 80

	Sending of status e-mails	
Guide rails	available for all belt lengths	
Belt transition plates	available for all belt widths	closes the gaps between the belt bodies
Draft shield	from the top	reduces interfering influences resulting from drafts
	from the bottom	
Options	Facts	Details
Metrologically approved as per OIML R 87	Prepack regulations (FPV) control, verifiable only for weighing belt lengths from 200 mm to 325 mm	The checkweighers are metrologically approved as per accuracy class XIII (1) and therefore suitable for prepack regulations control.
Indexing belt length	400, 600 mm	Shaft distance
Rejection systems	Air-jet nozzle	Further rejection systems upon request
	Double air-jet nozzle	
Compressed air tank for rejection system air jet nozzle	5 liter tank	Mandatory for air-jet nozzle
Reject bin	Stainless steel	
	Dimensions (L x D x H)	325 x 300 x 750 mm
	Opening (W x H)	300 x 212 mm
	Dimensions (L x D x H)	425 x 380 x 750 mm
	Opening (W x H)	400 x 212 mm
	Container fill level check	Light sensor
	Ejection monitoring	1 light sensor or 4 light sensors
Protocol printer	Lock for reject bin	available as latch or lock
	Mounted to control cabinet	Incl. license LINE_PRINTER and serial interface
Signal lamp	2-color	Red = fault, green = device okay
	3-color	Red = fault, yellow = stop, green = belts running
Emergency stop function	EMERG STOP with belt switch-off	Mounted to main column, turns off conveyor drives
	EMERG STOP with pneumatic system and belt switch-off	additionally switches off the pneumatic system
Emergency operation function	The conveyor belts of the checkweighers can be started manually even if the operating and control unit failed.	The belts run in order to ensure the production flow (without weighing function). Operation via extra module in the control cabinet with adjustable belt speeds.
Tendency control kit	Incl. license Tendency Control and relay	
Line integration kit	3 outputs via relay and 1 input	
Flow control	Light sensor	
Compressed air monitoring	stops the system when air pressure drops	
Software licenses	BRIDGE+MC_BUFFER	For buffering data in the event of LAN / pc failure as per prepack regulations, incl. conformity assessment
	VERIFIABLE_X1	
	ETHERNET	Ethernet connection via TCP/IP
	ONLINE	Communication via Gx-Net via ETHERNET
	SOFTCONTROL	For operation from a second work station
	TENDENCY CONTROL	To regulate filling systems (without relay)
	LINE_PRINTER	Required for external printer

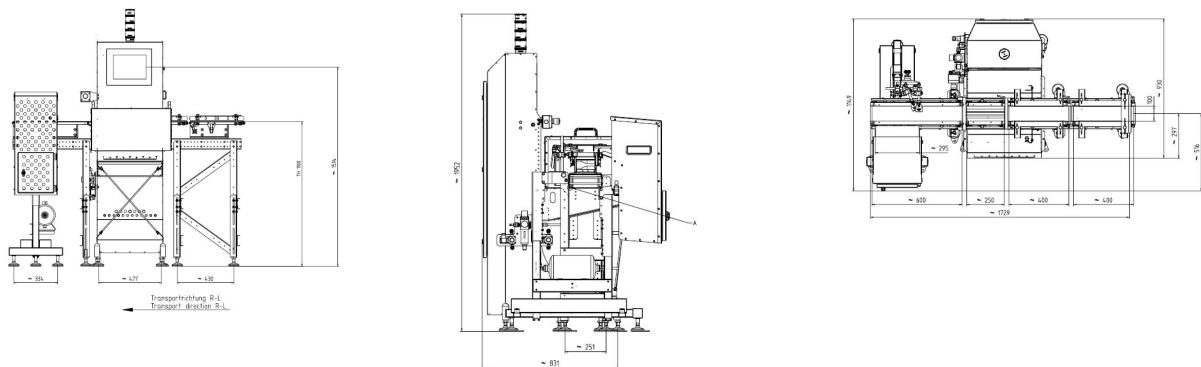
Info graphics



Symbols



Dimensional drawings



Bizerba SE & Co. KG
Wilhelm-Kraut-Straße 65
72336 Balingen

T +49 7433 12-0
fax: +49 7433 12-2696
marketing@bizerba.com

www.bizerba.com

Fact Sheet

CWEmaxx 1500

BIZERBA

Our high-performance checkweigher CWEmaxx is designed for up to 400 packages per minute. This all-rounder can be used for products weighing between 10 g and 15 kg and allows many applications thanks to IP65 protection.



More information
High performance
with a wide range of
solutions and options.

Specifications	Facts	Details
Weighing data	Weighing range: 1,000-1,500 g Scale division d: 0.1-0.5 g Verification scale interval e: 0.2-1 g Minimum load: 10-150 g	600 1,000 g 600 1,500 g 1,500 g 1,500 g 0.2 g 0.5 g 0.2 g 0.5 g 0.5 g 0.1 g 0.2 g 0.5 g 0.2 g 0.5 g 0.5 g 1 g 10 g 20 g 50 g 150 g
Performance data	Max. throughput: 219-400 packages per min. Max. belt speed: 70-170 m/min Min. belt speed: 5 m/min	Depending on length of weighing conveyor Depending on length of weighing conveyor
Device version / material	Stainless steel	1.4301
Operating panel	12" color touchscreen	
Interfaces	USB, EDP 1, 8 inputs, 8 outputs, Ethernet	EDP 1 (RS232 or RS422 or TTY)
IP rating	IP65	Conveying unit Control cabinet Display
Transport	Left to right right to left 750-1,150 mm +/-30 mm	Conveying direction Transport height
Conveyor belt	Conveyor widths: 100-225 mm Belt lengths: Weighing conveyor length: 150-750 mm Infeed conveyor length: 150-750 mm Rejection conveyor length: 150-1,250 mm Belt colors: white and blue Roll diameter: 22 mm Belt unit and quick-change belt system	100, 150, 225 mm Length specifications always as axle distance: 150, 200, 250, 325, 400, 500, 600, 750 mm 150, 200, 250, 325, 400, 500, 600, 750 mm 150, 200, 250, 325, 400, 500, 600, 750, 1,000, 1,250 mm white as a standard and blue optionally available Rollers made of aluminum, surface hard coated
Ambient conditions	0 °C to +40 °C 20 - 90%, non-condensing	Operating temperature Humidity
Energy supply	100-240 V, 50-60 Hz 500-750 VA 6 bar	Power supply Power consumption Compressed air supply
Software licenses	STATISTICS WEIGHT_CLASSES	To create statistics For classification of more than 3 products
Software variants	Code page software UNICODE software	Data transfer (texts & strings) Data transfer (texts & strings) in UTF-8 coding
further characteristics	Article memory Weight classes Remote maintenance Web interface	100,000 80

Sending of status e-mails

Options	Facts	Details
Metrologically approved as per OIML R 87	Prepack regulations (FPV) control, verifiable only for weighing belt lengths from 150 mm to 400 mm	The checkweighers are metrologically approved as per accuracy class XIII (1) and therefore suitable for prepack regulations control.
Metal detector	integrated metal detector	The metal detector is operated from the display of the checkweigher.
	Metal detector belt length	750 mm
Operating panel	7" color display with membrane keyboard	WVGA (800x480)
Indexing belt length	150, 200, 250, 325, 400, 500, 600, 750 mm	Shaft distance
Rejection systems	Air-jet nozzle	Further rejection systems upon request as a project
	Pusher	
Reject bin	Stainless steel	150 200 300 400 x 300 x 750 mm, Opening: 200 mm 250 350 500 x 310 410 x 750 mm, Opening: 250 mm
	Dimensions (L x D x H)	
	Container fill level check	
	Ejection monitoring	1 light sensor or 4 light sensors
	Lock for reject bin	available as latch or lock
	Door monitoring	stops the system when the reject bin door is open after expiration of an adjustable time
	Protocol printer	Mounted to control cabinet
Emergency stop	Emergency stop with belt switch-off	Mounted to main column, turns off conveyor drives
	Emergency stop with pneumatic system and belt switch-off	additionally switches off the pneumatic system
Signal lamp	2-color	Red = fault, green = device okay
	3-color	Red = fault, yellow = stop, green = belts running
Emergency operation function	The conveyor belts of the checkweighers can be started manually even if the operating and control unit failed.	The belts run in order to ensure the production flow (without weighing function). Operation via extra module in the control cabinet with adjustable belt speeds.
Tendency control kit	Incl. license Tendency Control and relay	
Line integration kit	3 outputs via relay and 1 input	
Flow control	Light sensor	
Draft shield	from the top	reduces interfering influences resulting from drafts
	from bottom	
Guiding bars	available for all belt lengths	
Belt transition plates	available for all belt widths	closes the gaps between the belt bodies
Compressed air monitoring	stops the system when air pressure drops	
Software licenses	BRIDGE+MC_BUFFER VERIFIABLE_X1	For buffering data in the event of LAN / pc failure as per prepack regulations, incl. conformity assessment
	ETHERNET	Ethernet connection via TCP/IP
	ONLINE	Communication via Gx-Net via ETHERNET

SOFTCONTROL
TENDENCY CONTROL
LINE_PRINTER

For operation from a second work station
To regulate filling systems (without relay)
Required for external printer

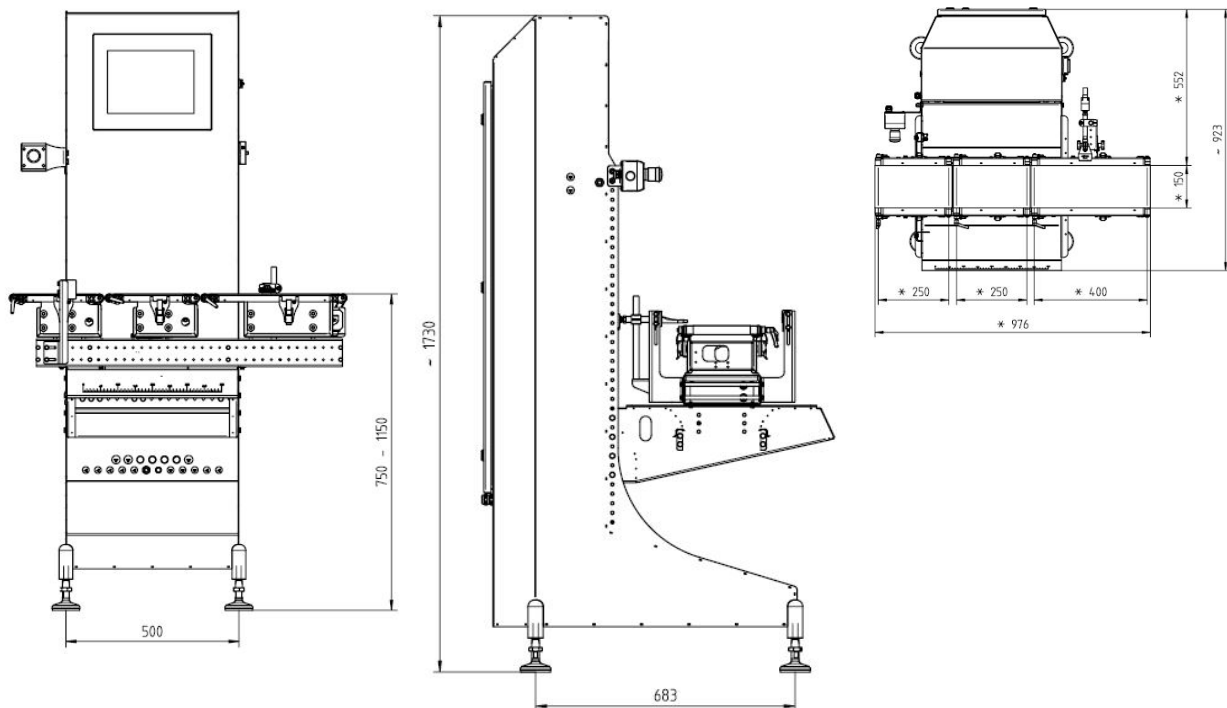
Info graphics

Symbols



400 packages per minute
IP65 protection
Unicode
e (metrologically approved)
Stainless steel
EMFR

Dimensional drawings



Bizerba SE & Co. KG
Wilhelm-Kraut-Straße 65
72336 Balingen

T +49 7433 12-0
fax: +49 7433 12-2696
marketing@bizerba.com

www.bizerba.com

Fact Sheet

CWEmaxx 3000

BIZERBA

Our high-performance checkweigher CWEmaxx is designed for up to 400 packages per minute. This all-rounder can be used for products weighing between 10 g and 15 kg and allows many applications thanks to IP65 protection.



More information
High performance
with a wide range of
solutions and options.

Specifications	Facts	Details
Weighing data	Weighing range: 3,000 g Scale division d: 0.1-1 g Verification scale interval e: 0.5-1 g Minimum load: 50-150 g	1,500 3,000 g 3,000 g 0.5 g 1 g 0.1 g 0.5 g 1 g 1 g 50 g 150 g
Performance data	Max. throughput: 152-329 packages per min. Max. belt speed: 79-120 m/min Min. belt speed: 5 m/min	Depending on length of weighing conveyor Depending on length of weighing conveyor
Device version / material	Stainless steel	1.4301
Operating panel	12" color touchscreen	
Interfaces	USB, EDP 1, 8 inputs, 8 outputs, Ethernet	EDP 1 (RS232 or RS422 or TTY)
IP rating	IP65	Conveying unit Control cabinet Display
Transport	Left to right right to left 750-1,150 mm +/-30 mm	Conveying direction Transport height
Conveyor belt	Conveyor widths: 150-300 mm Belt lengths: Weighing conveyor length: 200-750 mm Infeed conveyor length: 200-750 mm Rejection conveyor length: 200-1,250 mm Belt colors: white and blue Roll diameter: 32 mm Belt unit and quick-change belt system	150, 225, 300 mm Length specifications always as axle distance: 200, 250, 325, 400, 500, 600, 750 mm 200, 250, 325, 400, 500, 600, 750 mm 200, 250, 325, 400, 500, 600, 750, 1,000, 1,250 mm white as a standard and blue optionally available Rollers made of aluminum, surface hard coated
Ambient conditions	0 °C to +40 °C 20 - 90%, non-condensing	Operating temperature Humidity
Energy supply	100-240 V, 50-60 Hz 500-750 VA 6 bar	Power supply Power consumption Compressed air supply
Software licenses	STATISTICS WEIGHT_CLASSES	To create statistics For classification of more than 3 products
Software variants	Code page software UNICODE software	Data transfer (texts & strings) Data transfer (texts & strings) in UTF-8 coding
further characteristics	Article memory Weight classes Remote maintenance Web interface	100,000 80

Options	Facts	Details
Metrologically approved as per OIML R 87	Prepack regulations (FPV) control	The checkweighers are metrologically approved as per accuracy class XIII (1) and therefore suitable for prepack regulations control.
Metal detector	integrated metal detector	The metal detector is operated from the display of the checkweigher.
	Metal detector belt length	750 1,000 mm
Operating panel	7" color display with membrane keyboard	WVGA (800x480)
Indexing belt length	200, 250, 325, 400, 500, 600, 750 mm	Shaft distance
Rejection systems	Air-jet nozzle	Further rejection systems upon request as a project
	Pusher	
	Divider	
	Catcher	
	Flap reject	
	Swing and drop belt	
Reject bin	Stainless steel	
	Dimensions (L x D x H)	150 200 300 400 x 300 x 750 mm, Opening: 200 mm 250 350 500 x 310 410 x 750 mm, Opening: 250 mm
	Container fill level check	Light sensor
	Ejection monitoring	1 light sensor or 4 light sensors
	Lock for reject bin	available as latch or lock
	Door monitoring	stops the system when the reject bin door is open after expiration of an adjustable time
Protocol printer	Mounted to control cabinet	Incl. license LINE_PRINTER and serial interface
Emergency stop	Emergency stop with belt switch-off	mounted to main column, turns off conveyor drives
	Emergency stop with pneumatic system and belt switch-off	additionally switches off the pneumatic system
Signal lamp	2-color	Red = fault, green = device okay
	3-color	Red = fault, yellow = stop, green = belts running
Emergency operation function	The conveyor belts of the checkweighers can be started manually even if the operating and control unit failed.	The belts run in order to ensure the production flow (without weighing function). Operation via extra module in the control cabinet with adjustable belt speeds.
Tendency control kit	Incl. license Tendency Control and relay	
Line integration kit	3 outputs via relay and 1 input	
Flow control	Light sensor	
Draft shield	from the top	reduces interfering influences resulting from drafts
	from bottom	
Guiding bars	available for all belt lengths	
Belt transition plates	available for all belt widths	closes the gaps between the belt bodies
Compressed air monitoring	stops the system when air pressure drops	
Software licenses	BRIDGE+MC_BUFFER	For buffering data in the event of LAN / pc failure

VERIFIABLE_X1

as per prepack regulations, incl. conformity assessment

ETHERNET

Ethernet connection via TCP/IP

ONLINE

Communication via Gx-Net via ETHERNET

SOFTCONTROL

For operation from a second work station

TENDENCY CONTROL

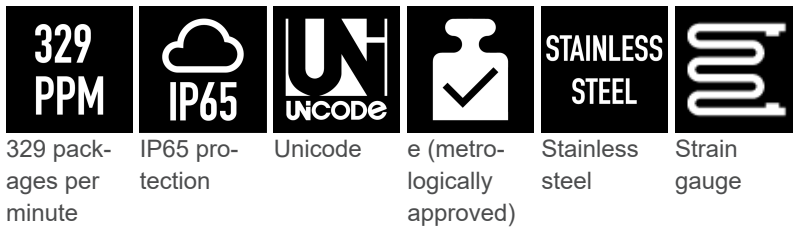
To regulate filling systems (without relay)

LINE_PRINTER

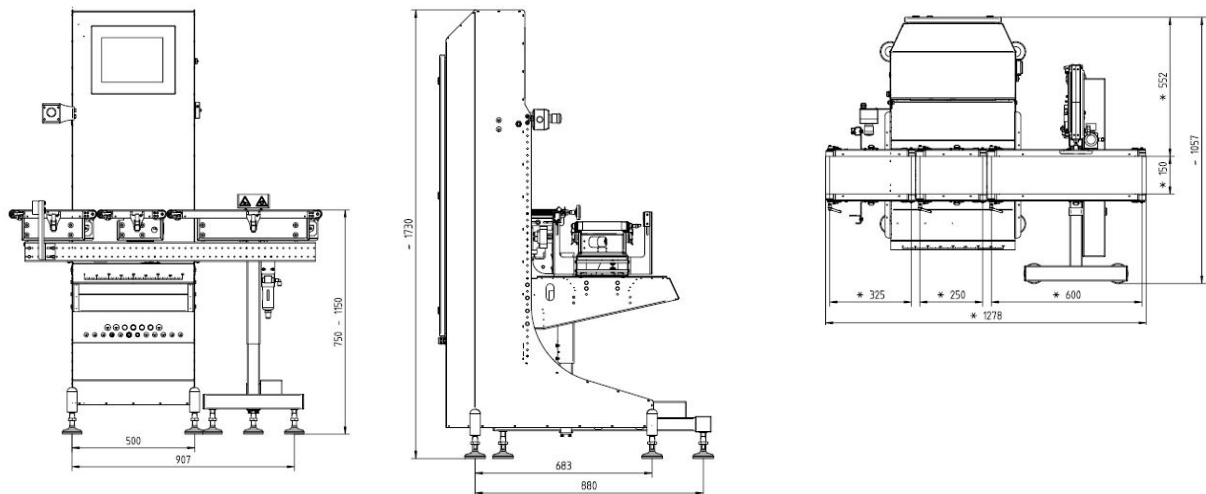
Required for external printer

Info graphics

Symbols



Dimensional drawings



Bizerba SE & Co. KG

Wilhelm-Kraut-Straße 65
72336 Balingen

T +49 7433 12-0

fax: +49 7433 12-2696

marketing@bizerba.com

www.bizerba.com

Fact Sheet

CWEmaxx 6000

BIZERBA

Our high-performance checkweigher CWEmaxx is designed for up to 400 packages per minute. This all-rounder can be used for products weighing between 10 g and 15 kg and allows many applications thanks to IP65 protection.



More information
High performance
with a wide range of
solutions and options.

Specifications	Facts	Details
Weighing data	Weighing range: 6,000 g	3,000 6,000 g
	Scale division d: 1-2 g	1 g 2 g
	Verification scale interval e: 1-2 g	1 g 2 g
	Minimum load: 150 g	150 g
Performance data	Max. throughput: 152-329 packages per min.	Depending on length of weighing conveyor
	Max. belt speed: 120 m/min	
	Min. belt speed: 5 m/min	
Device version / material	Stainless steel	1.4301
Operating panel	12" color touchscreen	
Interfaces	USB, EDP 1, 8 inputs, 8 outputs, Ethernet	EDP 1 (RS232 or RS422 or TTY)
IP rating	IP65	Conveying unit
		Control cabinet
		Display
Transport	Left to right right to left	Conveying direction
	750-1,150 mm +/-30 mm	Transport height
Conveyor belt	Conveyor widths: 225-400 mm	225, 300, 400 mm
	Belt lengths:	Length specifications always as axle distance:
	Weighing conveyor length: 325-750 mm	325, 400, 500, 600, 750 mm
	Infeed conveyor length: 325-750 mm	325, 400, 500, 600, 750 mm
	Rejection conveyor length: 325-1,500 mm	325, 400, 500, 600, 750, 1,000, 1,250, 1,500 mm
	Belt colors: white and blue	white as a standard and blue optionally available
	Roll diameter: 32 mm	Rollers made of aluminum, surface hard coated
Ambient conditions	Belt unit and quick-change belt system	
	0 °C to +40 °C	Operating temperature
Energy supply	20 - 90%, non-condensing	Humidity
	100-240 V, 50-60 Hz	Power supply
	500-750 VA	Power consumption
	6 bar	Compressed air supply
Software licenses	STATISTICS	For classification of more than 3 products
	WEIGHT_CLASSES	
Software variants	Code page software	Data transfer (texts & strings)
	UNICODE software	Data transfer (texts & strings) in UTF-8 coding
further characteristics	Article memory	100,000
	Weight classes	80
	Remote maintenance	
	Web interface	
	Sending of status e-mails	

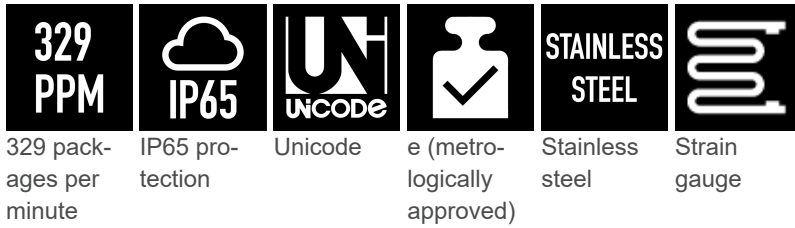
Options	Facts	Details
Metrologically approved as per OIML R 87	Prepack regulations (FPV) control	The checkweighers are metrologically approved as per accuracy class XIII (1) and therefore suitable for prepack regulations control.
Metal detector	integrated metal detector	The metal detector is operated from the display of the checkweigher.
	Metal detector belt length	750 1,000 mm
Operating panel	7" color display with membrane keyboard	WVGA (800x480)
Indexing belt length	325, 400, 500, 600, 750 mm	Shaft distance
Rejection systems	Air-jet nozzle	Further rejection systems upon request as a project
	Pusher	
	Divider	
	Catcher	
	Flap reject	
	Swing and drop belt	
Reject bin	Stainless steel	150 200 300 400 x 300 x 750 mm, Opening: 200 mm 250 350 500 x 310 410 x 750 mm, Opening: 250 mm Light sensor 1 light sensor or 4 light sensors available as latch or lock stops the system when the reject bin door is open after expiration of an adjustable time
	Dimensions (L x D x H)	
	Container fill level check	
	Ejection monitoring	
	Lock for reject bin	
	Door monitoring	
Protocol printer	Mounted to control cabinet	Incl. license LINE_PRINTER and serial interface
Emergency stop	Emergency stop with belt switch-off	mounted to main column, turns off conveyor drives
	Emergency stop with pneumatic system and belt switch-off	additionally switches off the pneumatic system
Signal lamp	2-color	Red = fault, green = device okay
	3-color	Red = fault, yellow = stop, green = belts running
Emergency operation function	The conveyor belts of the checkweighers can be started manually even if the operating and control unit failed.	The belts run in order to ensure the production flow (without weighing function). Operation via extra module in the control cabinet with adjustable belt speeds.
Tendency control kit	Incl. license Tendency Control and relay	
Line integration kit	3 outputs via relay and 1 input	
Flow control	Light sensor	
Draft shield	from the top from the bottom	reduces interfering influences resulting from drafts
Guiding bars	available for all belt lengths	
Belt transition plates	available for all belt widths	closes the gaps between the belt bodies
Compressed air monitoring	stops the system when air pressure drops	
Software licenses	BRIDGE+MC_BUFFER VERIFIABLE_X1	For buffering data in the event of LAN / pc failure as per prepack regulations, incl. conformity assessment

ETHERNET
ONLINE
SOFTCONTROL
TENDENCY CONTROL
LINE_PRINTER

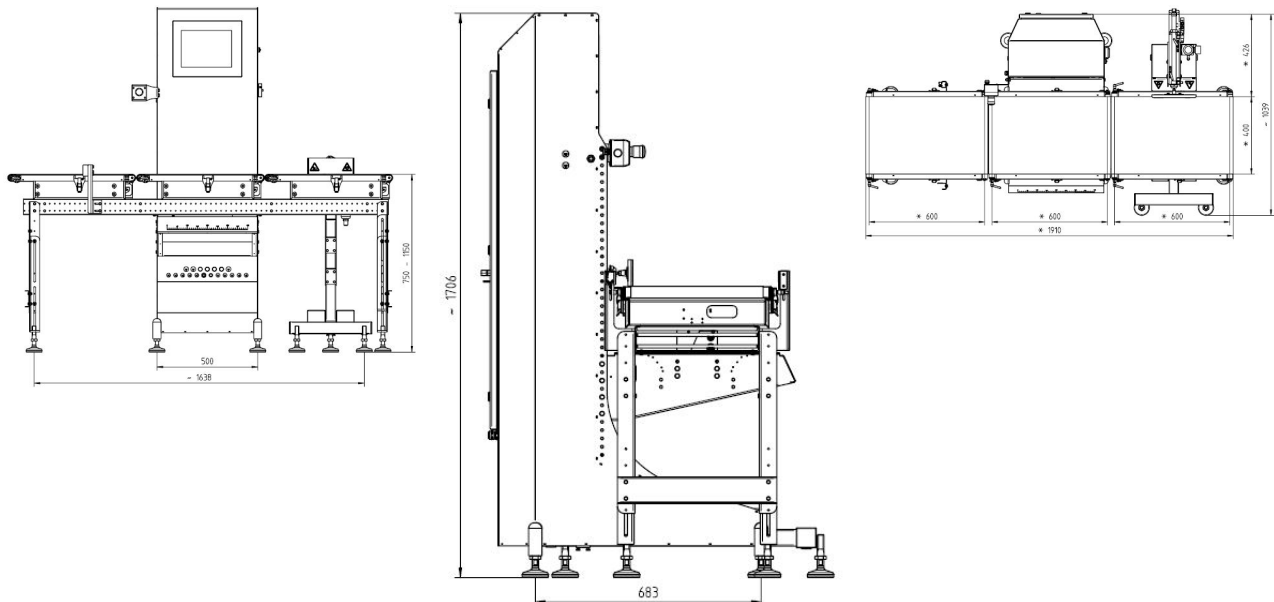
Ethernet connection via TCP/IP
Communication via Gx-Net via ETHERNET
For operation from a second work station
To regulate filling systems (without relay)
Required for external printer Info graphics

Info graphics

Symbols



Dimensional drawings



Bizerba SE & Co. KG
Wilhelm-Kraut-Straße 65
72336 Balingen

T +49 7433 12-0
fax: +49 7433 12-2696
marketing@bizerba.com

www.bizerba.com

Fact Sheet

CWEmaxx 15000

BIZERBA

Our high-performance checkweigher CWEmaxx is designed for up to 400 packages per minute. This all-rounder can be used for products weighing between 10 g and 15 kg and allows many applications thanks to IP65 protection.



More information
High performance
with a wide range of
solutions and options.

Specifications	Facts	Details
Weighing data	Weighing range: 15,000 g Scale division d: 2-5 g Verification scale interval e: 2/5 g Minimum load: 500 g	6,000 15,000 g 2 g 5 g 2 g 5 g 500 g
Performance data	Max. throughput: 92-200 packages per min. Max. belt speed: 90 m/min Min. belt speed: 5 m/min	Depending on length of weighing conveyor
Device version / material	Stainless steel	1.4301
Operating panel	12" color touchscreen	
Interfaces	USB, EDP 1, 8 inputs, 8 outputs, Ethernet	EDP 1 (RS232 or RS422 or TTY)
IP rating	IP65	Conveying unit Control cabinet Display
Transport	Left to right right to left 750-1,150 mm +/-30 mm	Conveying direction Transport height
Conveyor belt	Conveyor widths: 225-400 mm Belt lengths: Weighing conveyor length: 325-750 mm Infeed conveyor length: 325-750 mm Rejection conveyor length: 325-750 mm Belt colors: white and blue Roll diameter: 32 mm Belt unit and quick-change belt system	225, 300, 400 mm Length specifications always as axle distance: 325, 400, 500, 600, 750 mm 325, 400, 500, 600, 750 mm 325, 400, 500, 600, 750 mm white as a standard and blue optionally available Rollers made of aluminum, surface hard coated
Ambient conditions	+0 °C to +40 °C 20 - 90%, non-condensing	Operating temperature Humidity
Energy supply	100-240 V, 50-60 Hz 500-750 VA 6 bar	Power supply Power consumption Compressed air supply
Software licenses	STATISTICS WEIGHT_CLASSES	To create statistics For classification of more than 3 products
Software variants	Code page software UNICODE software	Data transfer (texts & strings) Data transfer (texts & strings) in UTF-8 coding
further characteristics	Article memory Weight classes Remote maintenance Web interface Sending of status e-mails	100,000 80

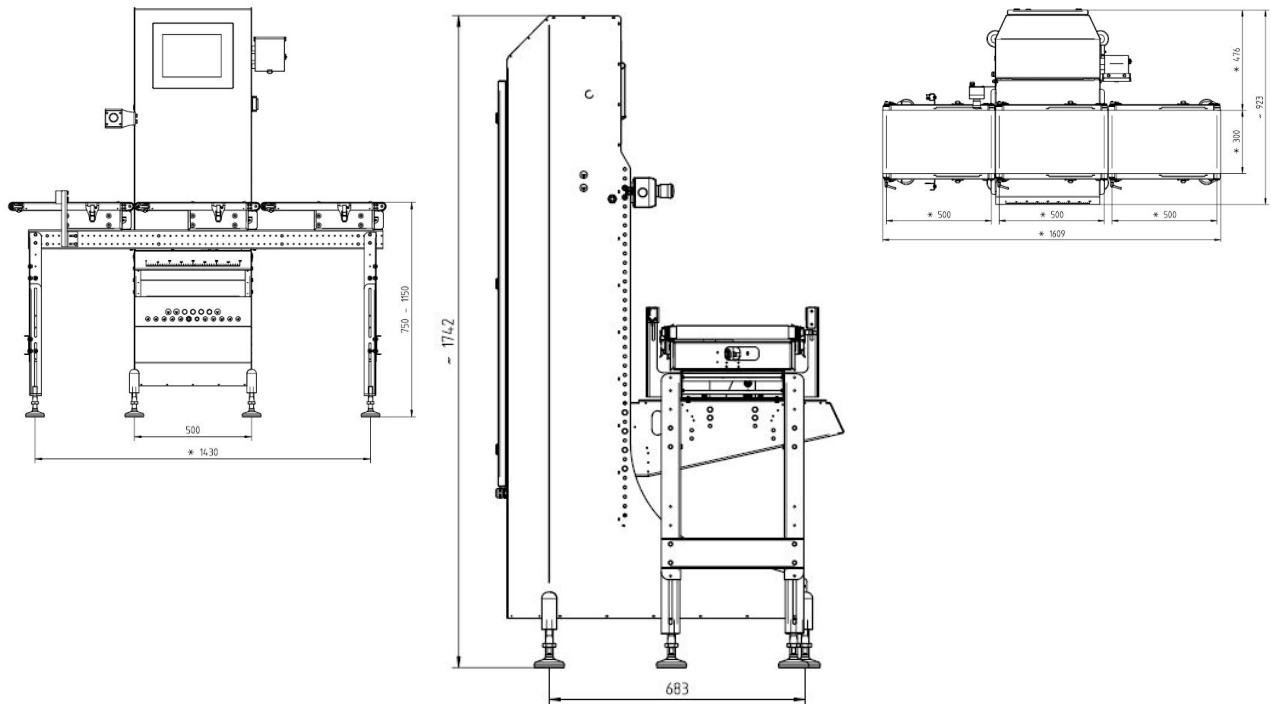
Options	Facts	Details
Metrologically approved as per OIML R 87	Prepack regulations (FPV) control	The checkweighers are metrologically approved as per accuracy class XIII (1) and therefore suitable for prepack regulations control.
Operating panel	7" color display with membrane keyboard	WVGA (800x480)
Indexing belt length	Upon request, handled as a project	
Rejection systems	Upon request, handled as a project	
Protocol printer	Mounted to control cabinet	Incl. license LINE_PRINTER and serial interface
Emergency stop	Emergency stop with belt switch-off	mounted to main column, turns off conveyor drives
	Emergency stop with pneumatic system and belt switch-off	additionally switches off the pneumatic system
Signal lamp	2-color	Red = fault, green = device okay
	3-color	Red = fault, yellow = stop, green = belts running
Emergency operation function	The conveyor belts of the checkweighers can be started manually even if the operating and control unit failed.	The belts run in order to ensure the production flow (without weighing function). Operation via extra module in the control cabinet with adjustable belt speeds.
Tendency control kit	Incl. license Tendency Control and relay	
Line integration kit	3 outputs via relay and 1 input	
Flow control	Light sensor	
Guiding bars	available for all belt lengths	
Belt transition plates	available for all belt widths	closes the gaps between the belt bodies
Compressed air monitoring	stops the system when air pressure drops	
Software licenses	BRIDGE+MC_BUFFER VERIFIABLE_X1 ETHERNET ONLINE SOFTCONTROL TENDENCY CONTROL LINE_PRINTER	For buffering data in the event of LAN / pc failure as per prepack regulations, incl. conformity assessment Ethernet connection via TCP/IP Communication via Gx-Net via ETHERNET For operation from a second work station To regulate filling systems (without relay) Required for external printer

Info graphics

Symbols



Dimensional drawings



Bizerba SE & Co. KG
Wilhelm-Kraut-Straße 65
72336 Balingen

T +49 7433 12-0
fax: +49 7433 12-2696
marketing@bizerba.com

www.bizerba.com